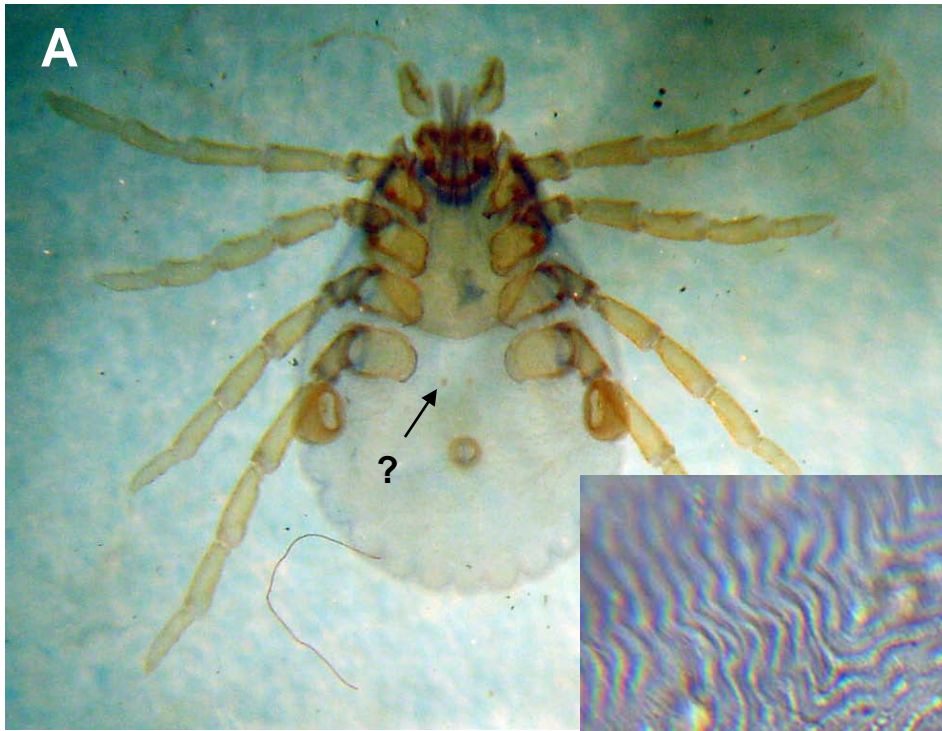
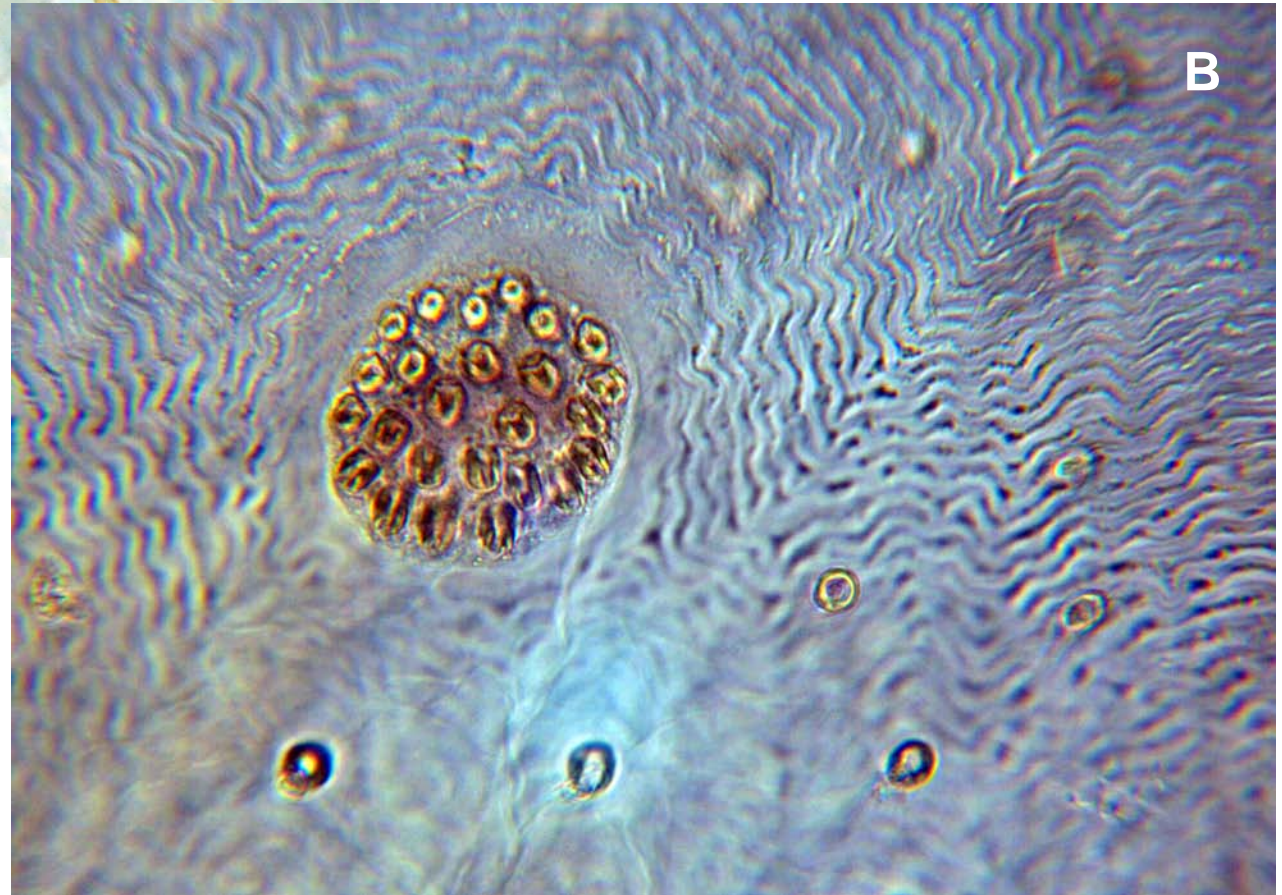


Boophilus annulatus, entire.

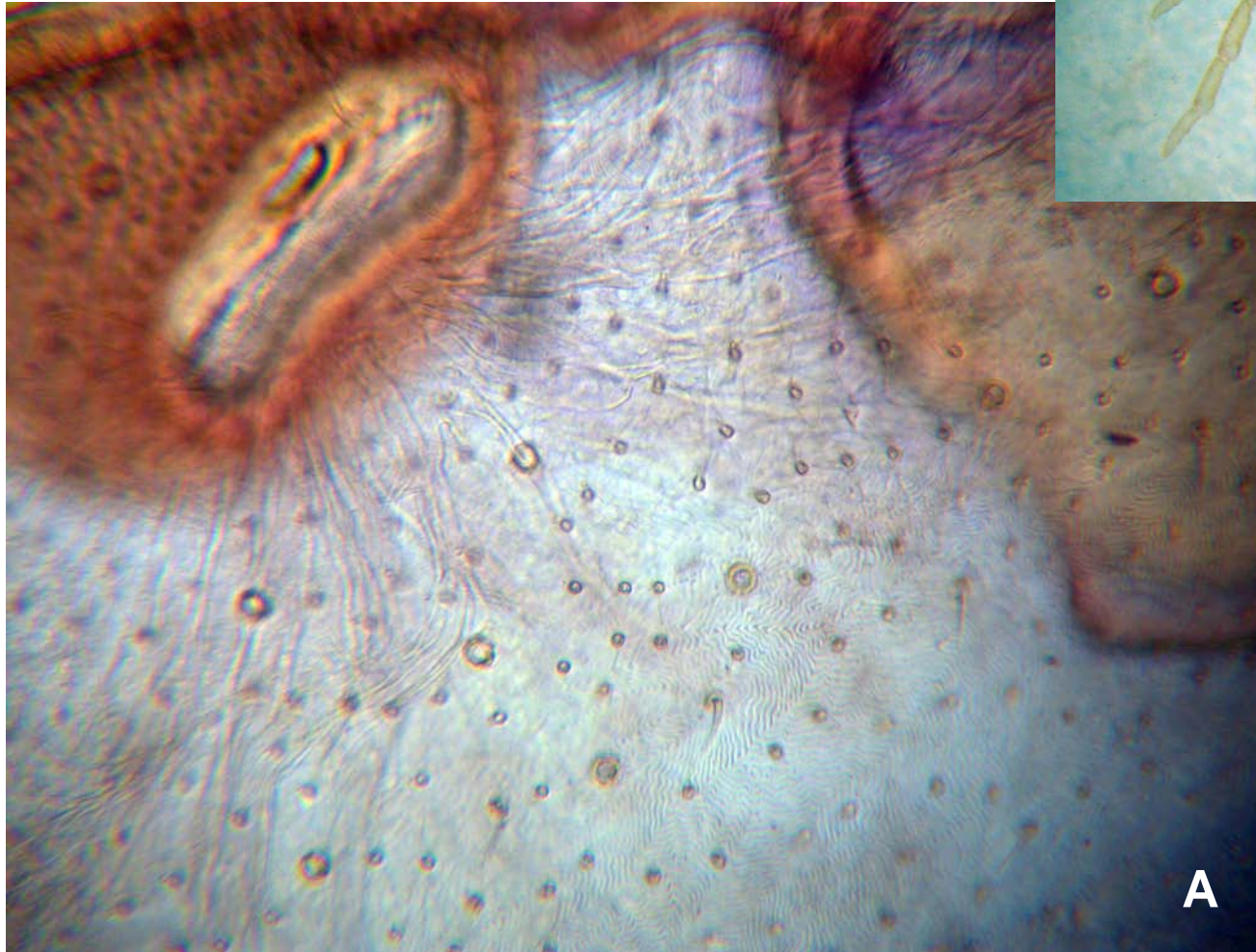


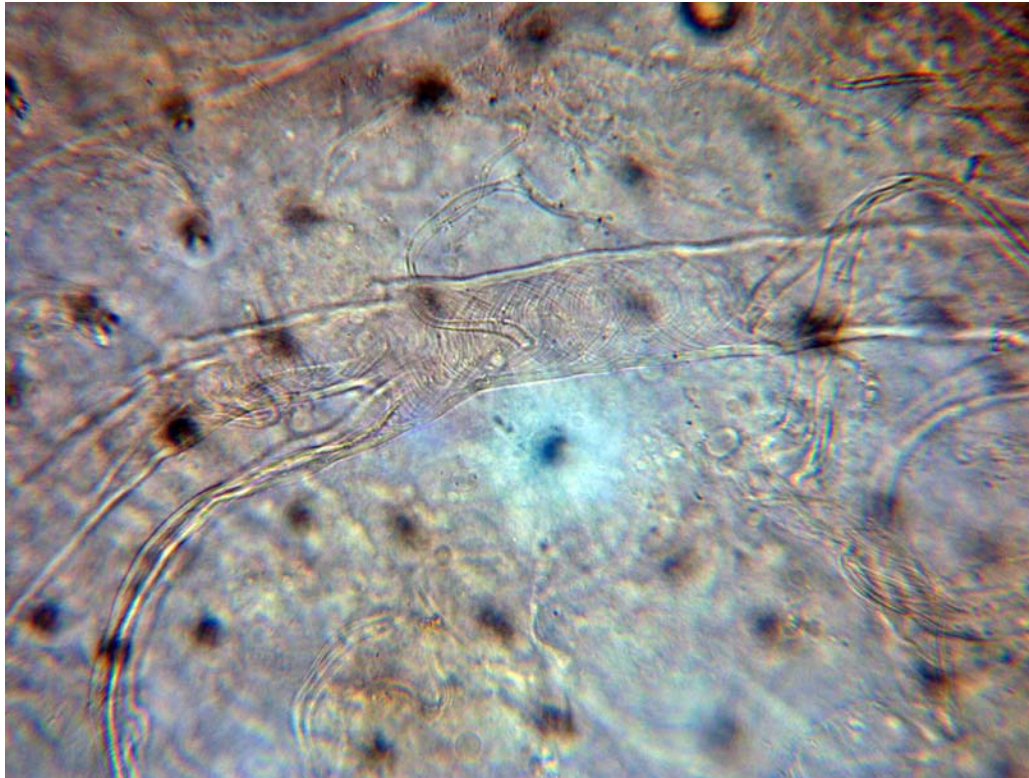
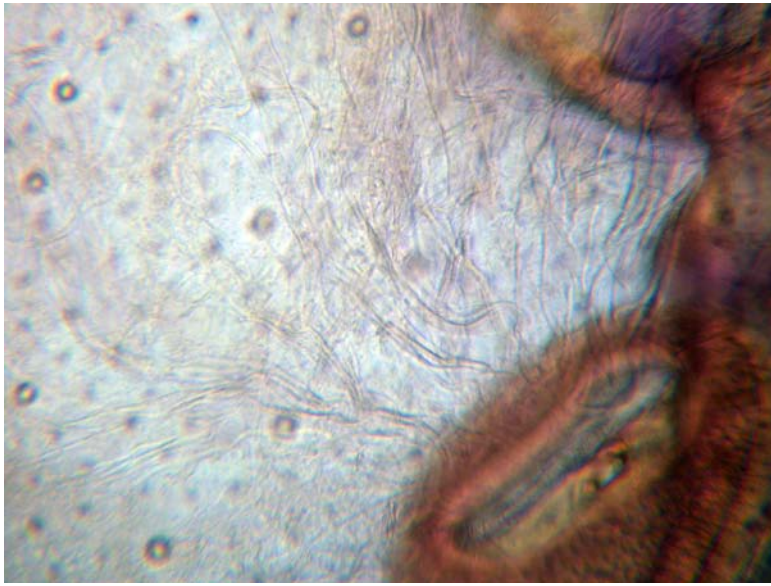


B. annulatus. Structure indicated by arrow in A, enlarged in B.



B. annulatus spiracle enlarged in A
(from box in B).
Note extensively branched tracheal system.



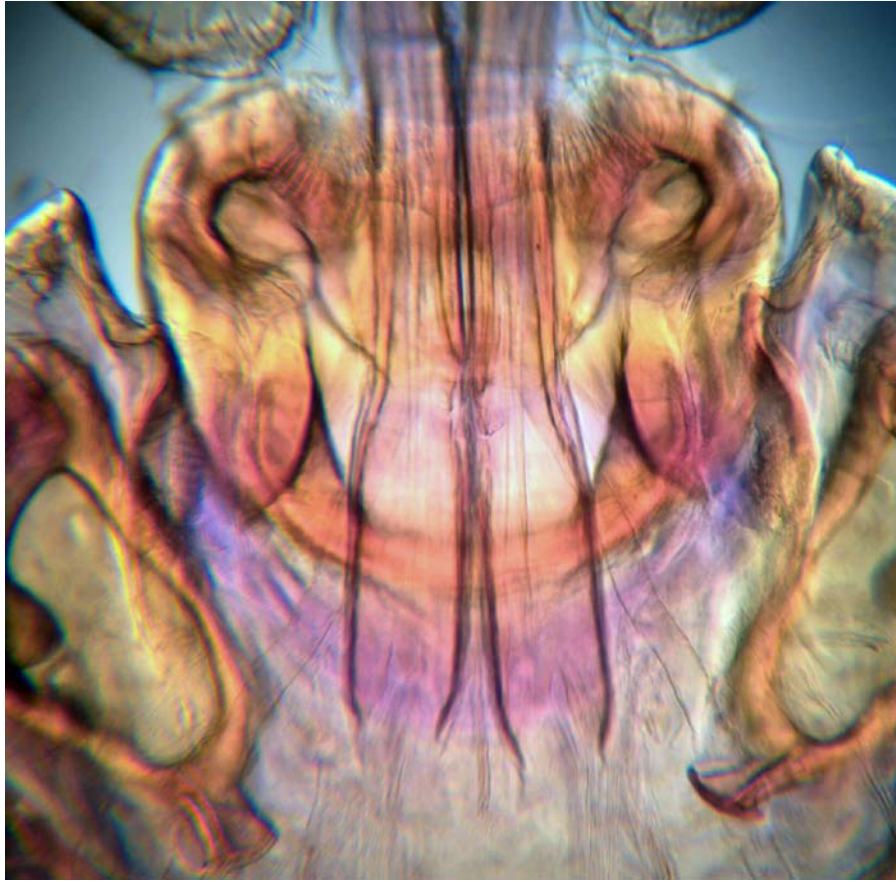


B. annulatus, spiracle and tracheal system (box area above).

B. annulatus mouth parts (arrow). Legend: c, chelicera; h, hypostome; p, palp; s, chelicera sheath (note minute spines).



Boophilus sp.; basis capitulum (two views).





Boophilus sp.; chelicerae
(two views).



Boophilus sp.; hypostome.

